

Internal View 1



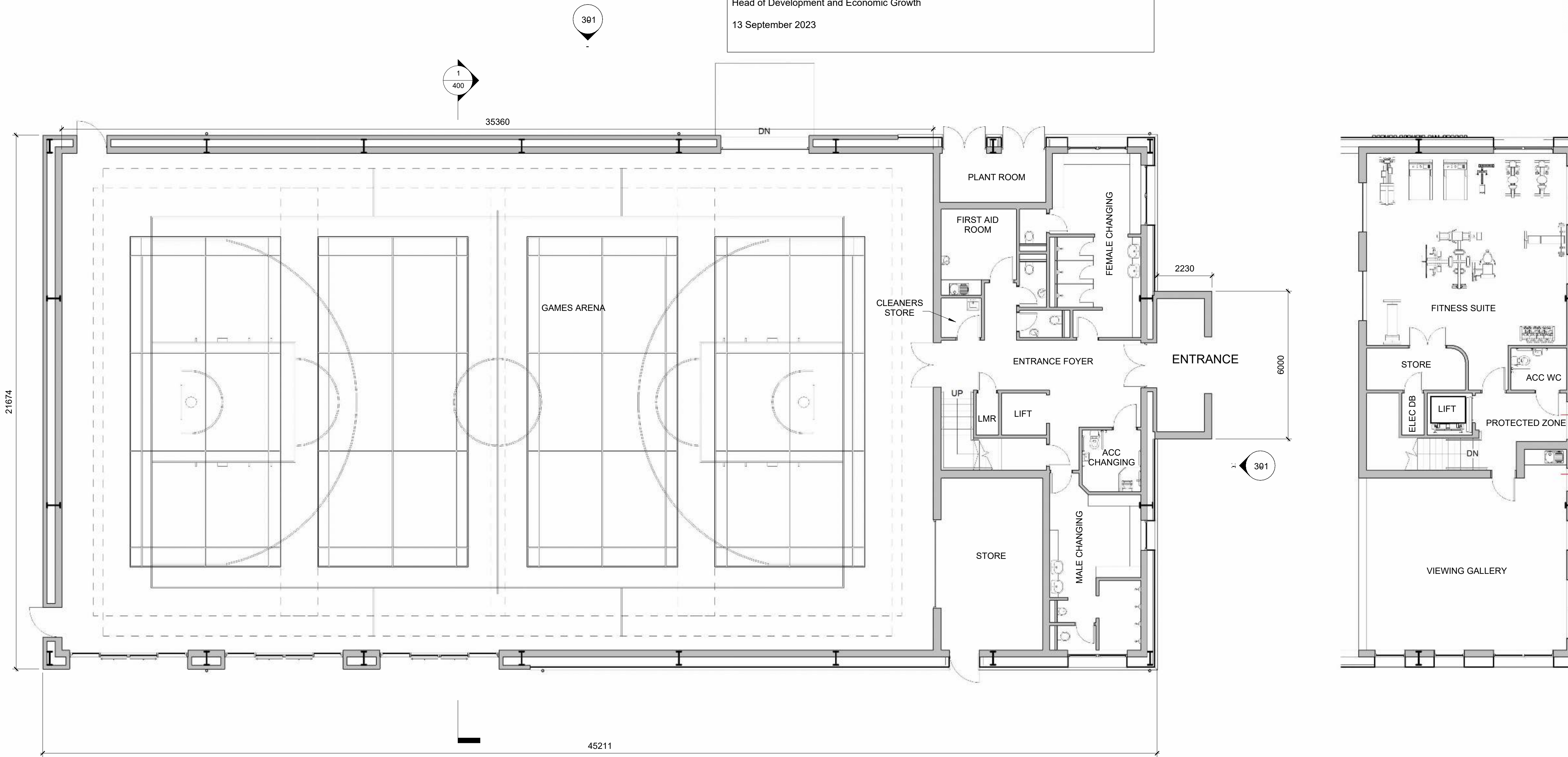
Internal View 2



Internal View 3

Argyll and Bute Council
This plan has been APPROVED by the PLANNING AUTHORITY and MUST be read in conjunction with the Planning Conditions of Consent No: 23/01341/PP

Fergus Murray
Head of Development and Economic Growth
13 September 2023



Ground Floor
1 : 100

First Floor Level
1 : 100

Rev	Description	Date
A	Building mirrored and accommodation revisited to provide enlarged changing facilities, and viewing gallery	13 April 23
B	Addition risers added to stair and T-prep altered	27/06/23
C	High Level Windows shown on GA for planning	13/07/23



PROJECT
Indoor Sports Facility

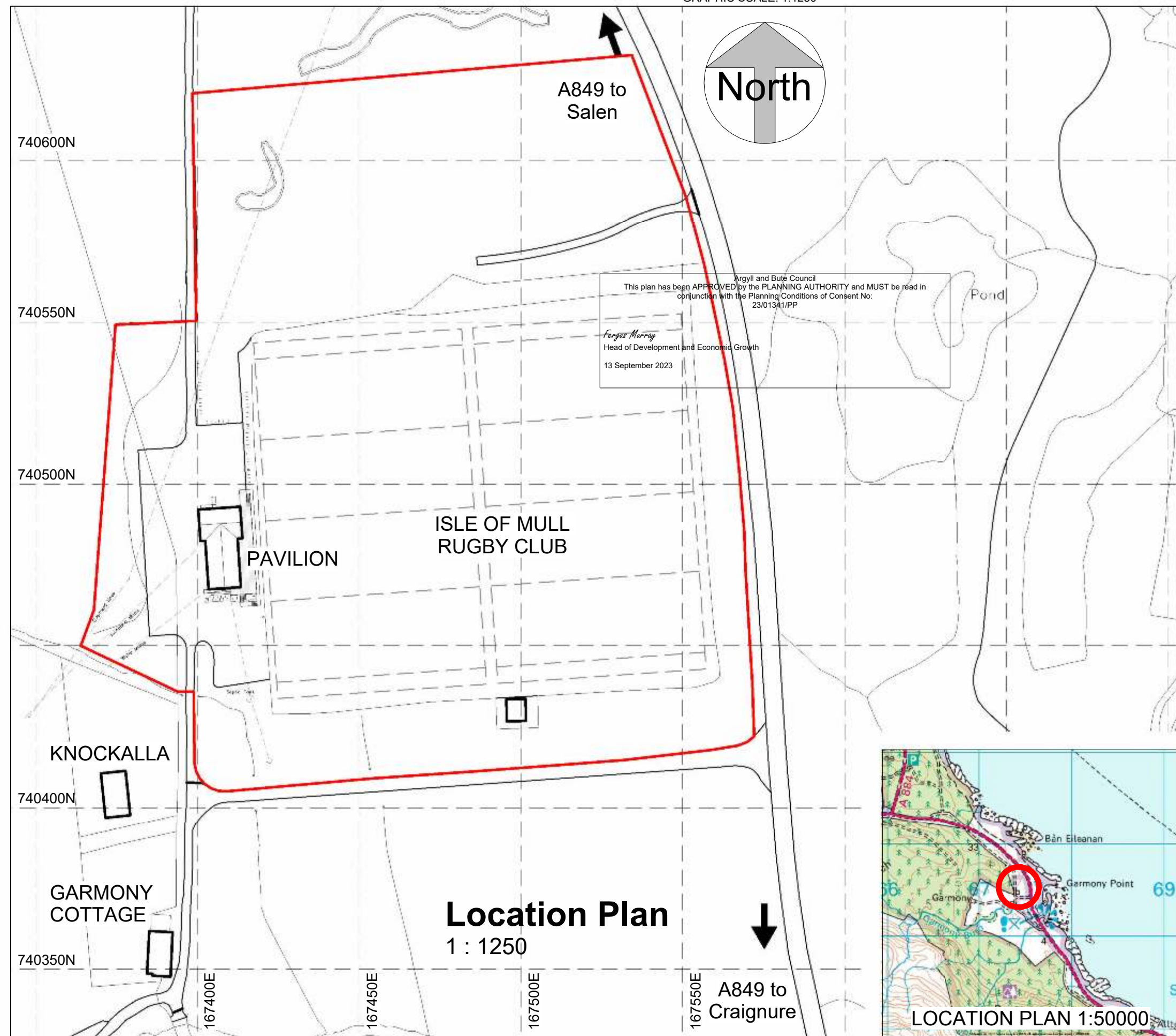
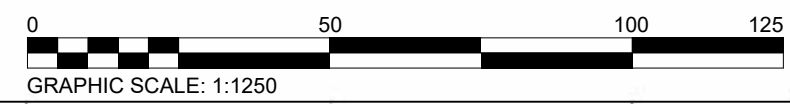
TITLE
Proposed Floor Plans

STATUS
PLANNING

SITE
Ground at Garmony,
Mull Rugby Football Club,
Isle of Mull

CLIENT
MULL COMMUNITY COUNCIL

DRAWN BY CM	CHECKED BY AGL	DATE 17.07.22
SCALE (@ A1) 1 : 100		PROJECT NUMBER 22-112
DRAWING NUMBER 200		REV C



Rev	Description	Date



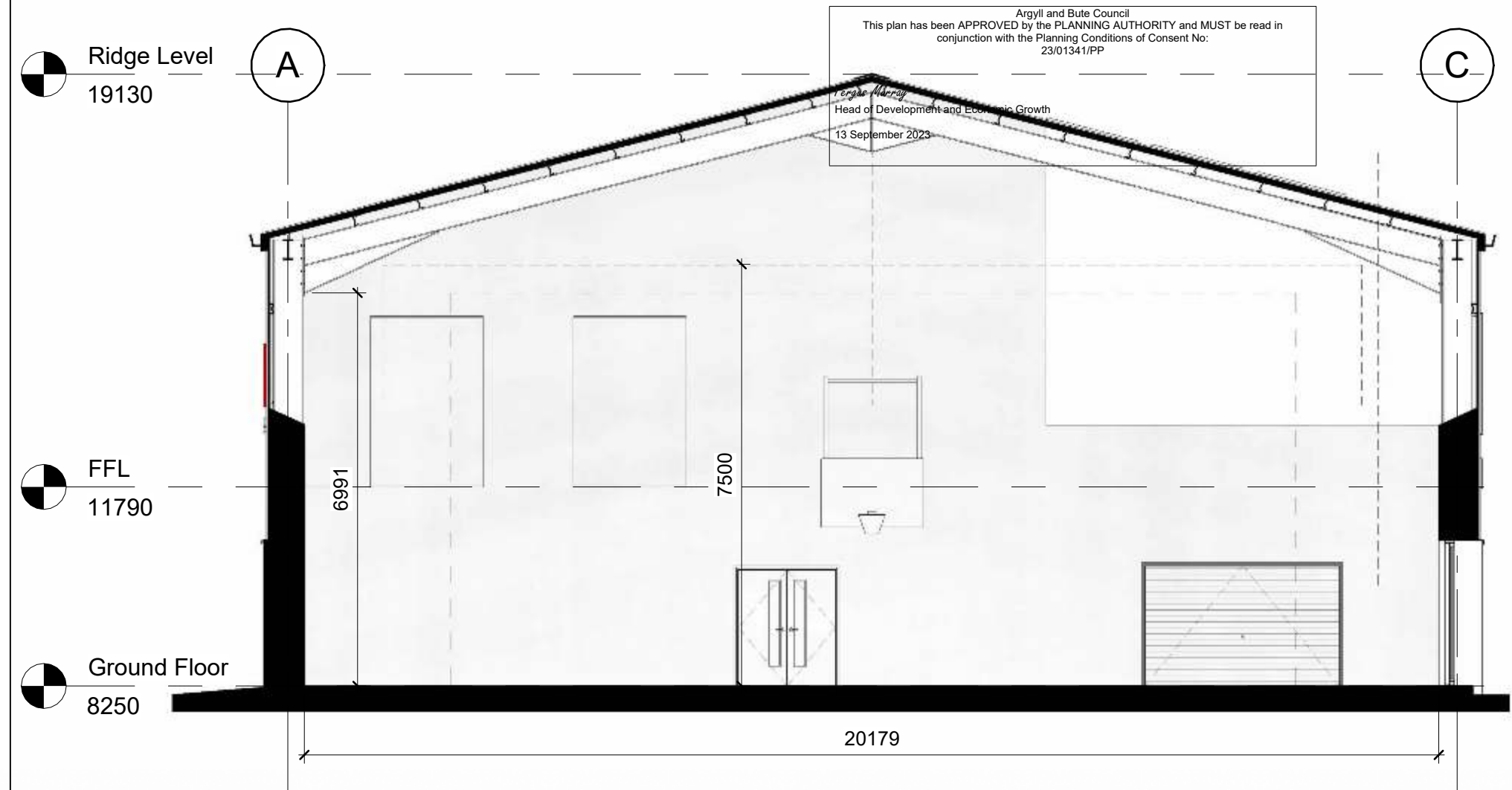
PROJECT		
Indoor Sports Facility		
TITLE		
Location Plan		
STATUS		
PLANNING		
SITE		
Ground at Garmony Mull Rugby Football Club Isle of Mull		
CLIENT		
Mull Community Council		
DRAWN BY	CHECKED BY	DATE
CM	AGL	10/07/23
SCALE (@ A3)		PROJECT NUMBER
1 : 1250		22-112
DRAWING NUMBER	REV	
100		

Mull and Bute Council
This plan has been approved by the PLANNING AUTHORITY and MUST be read in conjunction with the Planning Conditions of Consent No: 23013A/PP
Fergus Murray
Head of Development and Economic Growth
13 September 2023



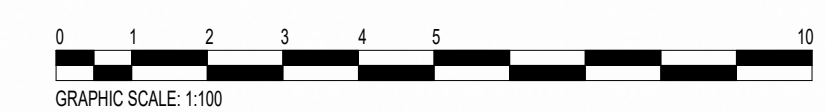
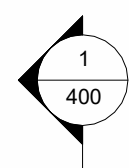


Rev	Description	Date
B	Eaves height raised to accommodate Sports Scotland Criteria	27/06/23



PROJECT		
Indoor Sports Facility		
TITLE		
SECTION A-A		
STATUS		
PLANNING		
SITE		
Ground at Garmony, Mull Rugby Football Club, Isle of Mull		
CLIENT		
MULL COMMUNITY COUNCIL		
DRAWN BY	CHECKED BY	DATE
AGL	AGL	17.07.22
SCALE (@ A3)		PROJECT NUMBER
1 : 100		22-112
DRAWING NUMBER		REV
400		B

Section A-A
1 : 100



MATERIALS:

WALLS: Combination of Charred Timber Cladding and Profiled Metal Sheet onto steel frame

ROOF: Profiled metal sheet roofing with PV Panels and Translucent Roof Lights

DOORS: High Performance Alu Clad timber doors

WINDOWS: High Performance Alu Clad timber windows

RAINWATER GOODS: Aluminium guttering and downpipes

Proposed- North
1 : 100

Argyll and Bute Council
This plan has been APPROVED by the PLANNING AUTHORITY and MUST be read in conjunction with the Planning Conditions of Consent No: 23/01341/PP

Fergus Murray
Head of Development and Economic Growth
13 September 2023

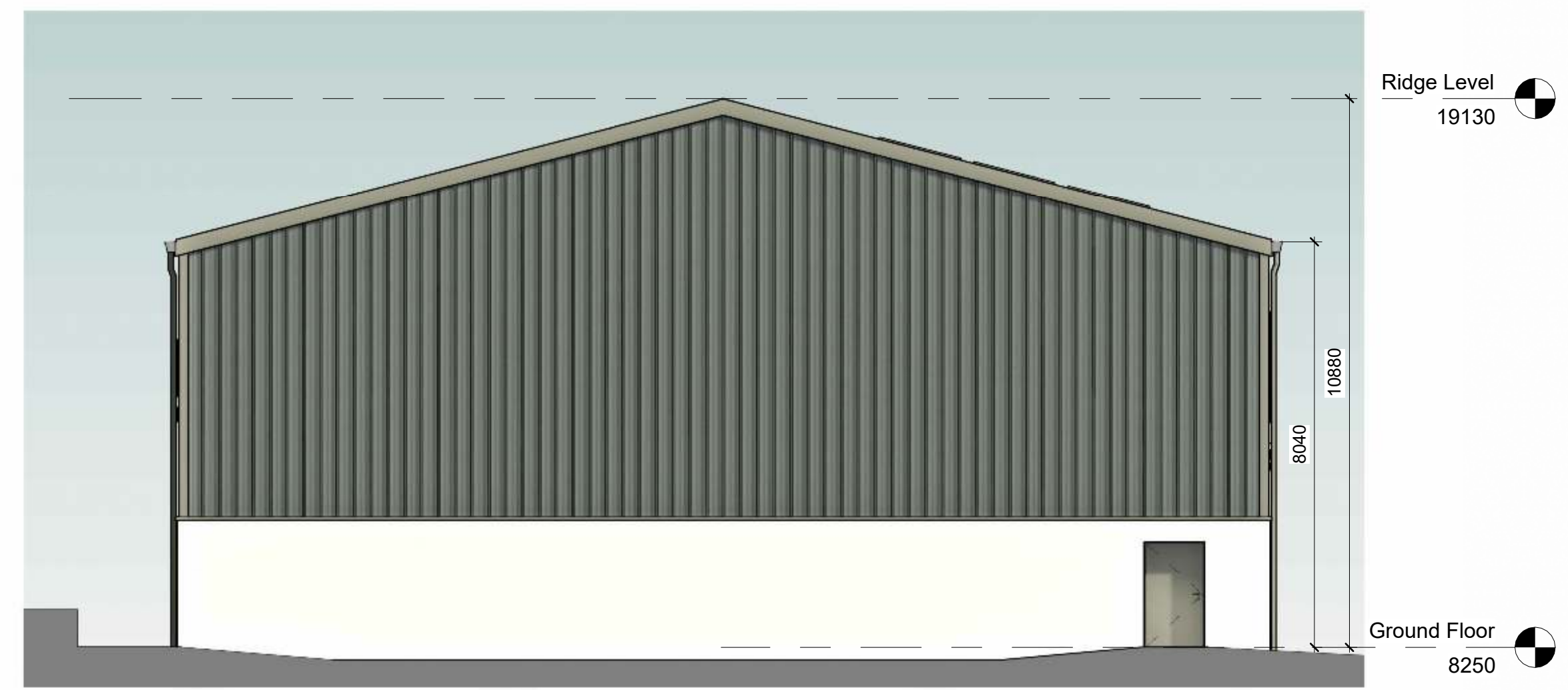


Proposed- South
1 : 100

Rev	Description	Date
A	Building mirrored and accommodation revisited to provide enlarged changing facilities, and viewing gallery	13 April 23
B	Eaves height raised to accommodate Sports Scotland Criteria	27/06/23



Proposed - East
1 : 100



Proposed - West
1 : 100

PROJECT
Indoor Sports Facility

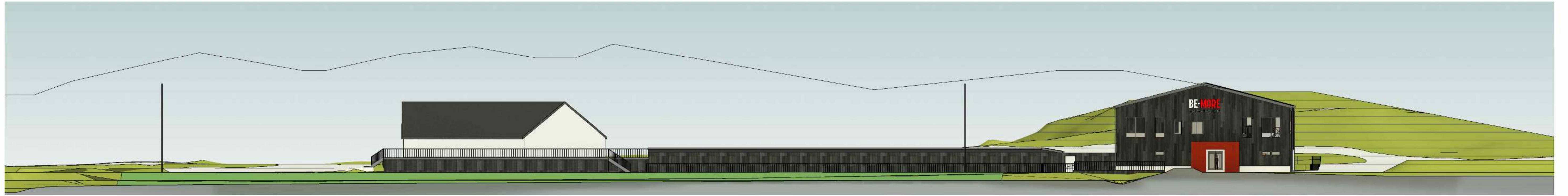
TITLE
Proposed Elevations

STATUS
PLANNING

SITE
Ground at Garmony,
Mull Rugby Football Club,
Isle of Mull

CLIENT
MULL COMMUNITY COUNCIL

DRAWN BY AGL	CHECKED BY AGL	DATE 17.07.22
SCALE (@ A1) As indicated		PROJECT NUMBER 22-112
DRAWING NUMBER 301	REV B	



East Site Section

1 : 250

Argyll and Bute Council
 This plan has been APPROVED by the PLANNING AUTHORITY and MUST be read in
 conjunction with the Planning Conditions of Consent No:
 23/01341/PP

Fergus Murray
 Head of Development and Economic Growth
 13 September 2023



South Site Section

1 : 250



Rev	Description	Date
A	Wet weather centre moved to avoid existing services. Building mirrored to provide vision to sound of Mull from viewing gallery	13 April 23
B	Building Height raised to accommodate SAports Scotland Criteria	4 July 23



PROJECT
Indoor Sports Facility

TITLE
 Site Sections & Elevations

STATUS
 PLANNING

SITE
 Ground at Garmony
 Mull Rugby Football Club
 Isle of Mull

CLIENT
 Mull Community Council

DRAWN BY
 AGL

CHECKED BY
 AGL

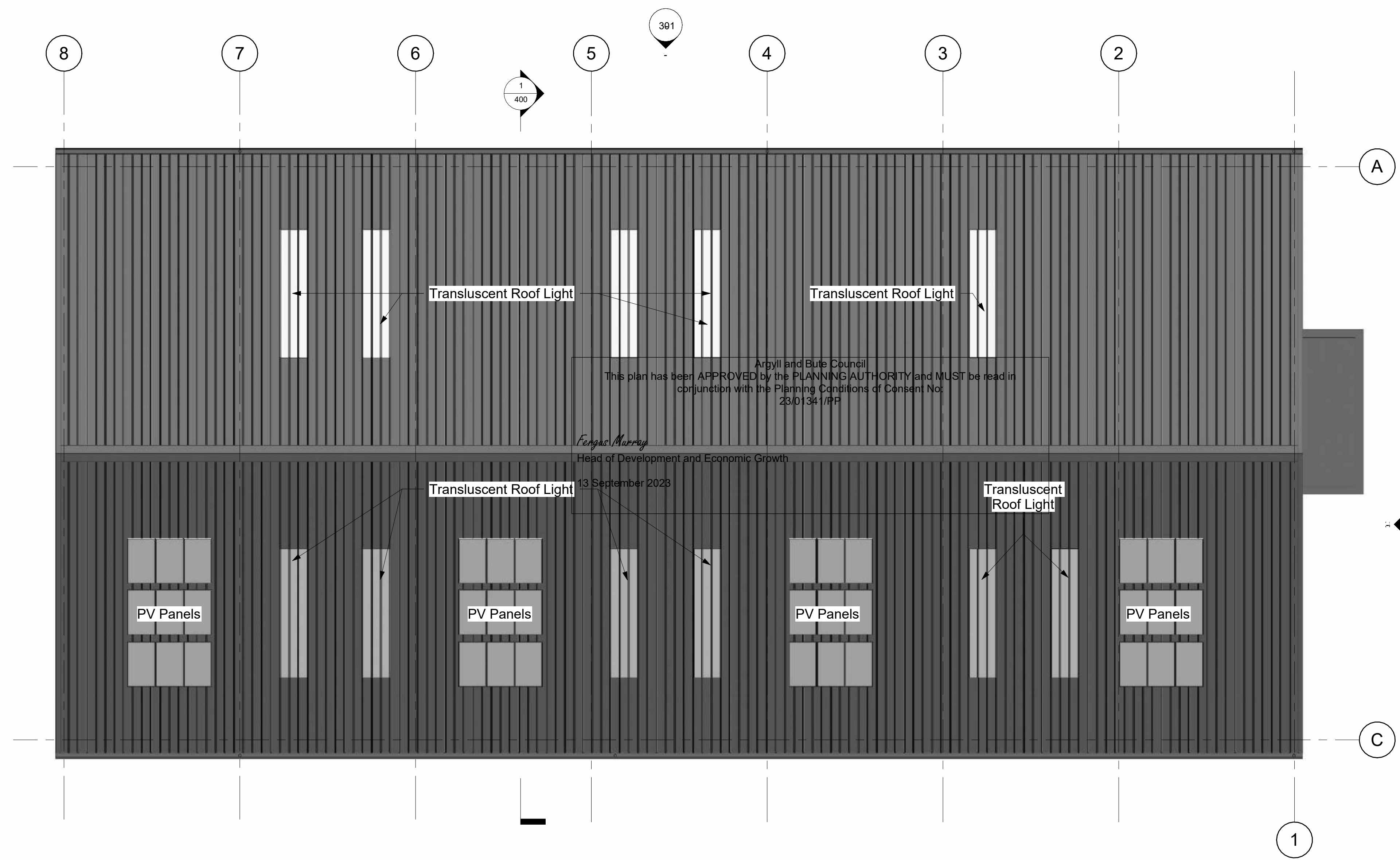
DATE
 23.08.22

SCALE (@ A1)
 1 : 250

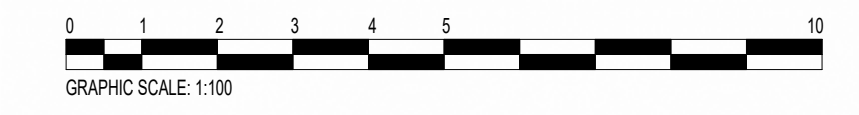
PROJECT NUMBER
 22-112

DRAWING NUMBER
 300

REV
 B



MATERIALS:
WALLS: Combination of Charred Timber Cladding and Profiled Metal Sheet onto steel frame
ROOF: Profiled metal sheet roofing with PV Panels and Translucent Roof Lights
DOORS: High Performance Alu Clad timber doors
WINDOWS: High Performance Alu Clad timber windows
RAINWATER GOODS: Aluminium guttering and downpipes



Argyll and Bute Council
 This plan has been APPROVED by the PLANNING AUTHORITY and MUST be read in conjunction with the Planning Conditions of Consent No. 23/01341/PP

Fergus Murray
 Head of Development and Economic Growth
 13 September 2023

Roof Plan
 1 : 100

Rev	Description	Date



PROJECT	Indoor Sports Facility	
TITLE	Roof Plan	
STATUS	PLANNING	
SITE	Ground at Garmony, Mull Rugby Football Club, Isle of Mull	
CLIENT	MULL COMMUNITY COUNCIL	
DRAWN BY	CHECKED BY	DATE
CM	AGL	27/06/23
SCALE (@ A1)	PROJECT NUMBER	
As indicated	22-112	
DRAWING NUMBER	REV	
202		